

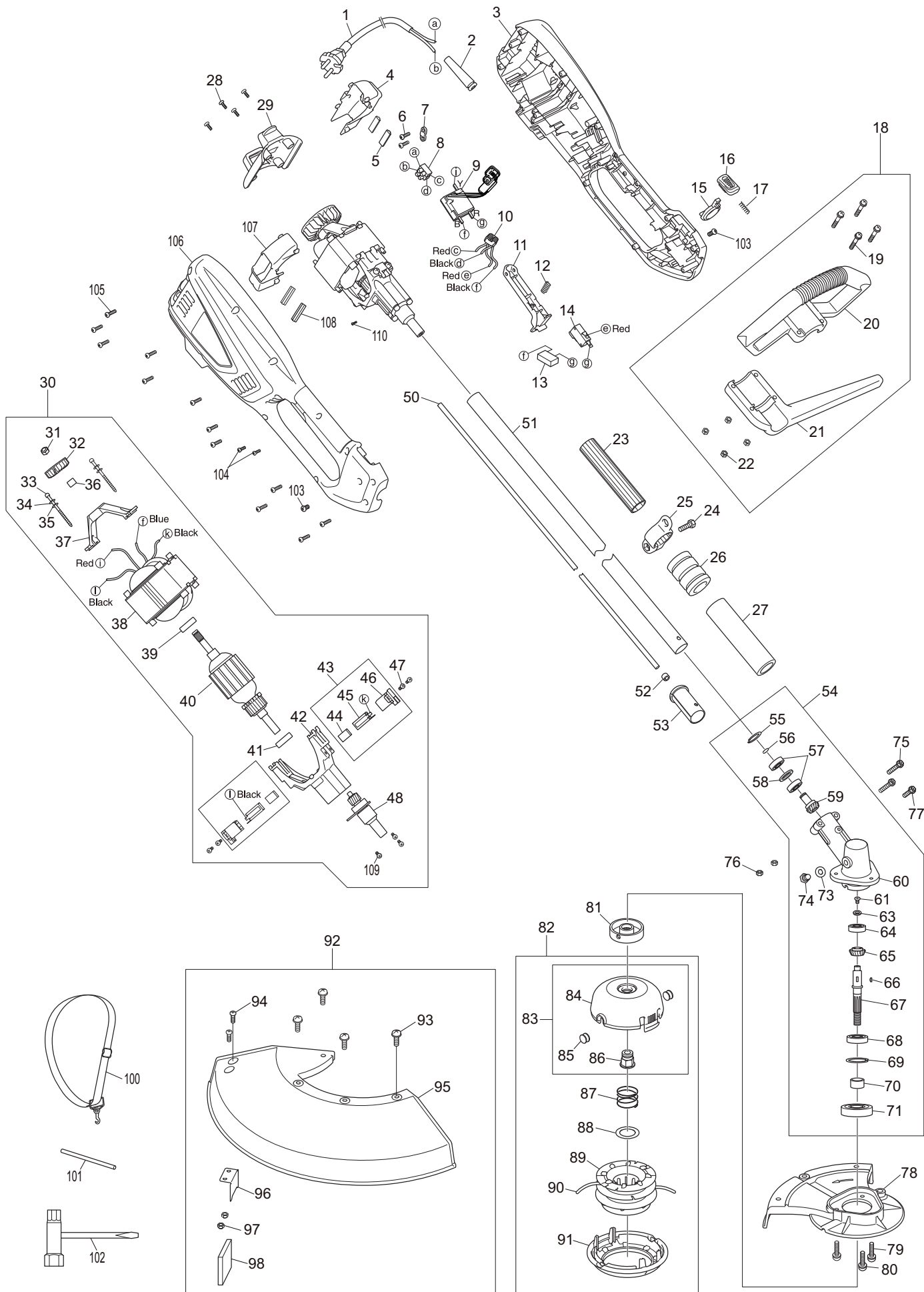


Ersatzteilliste  
Spare Parts List

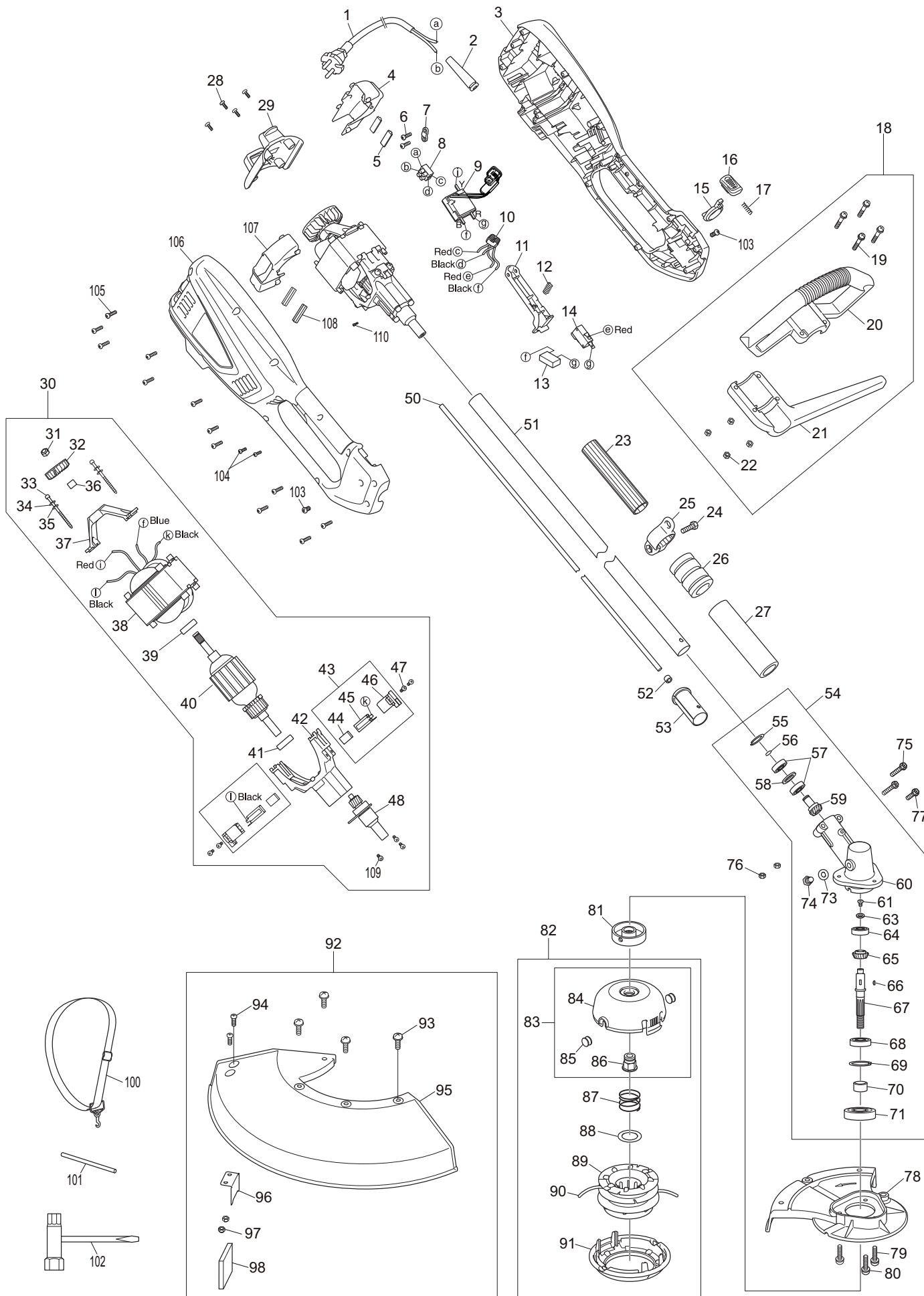
2017-06

ET110C  
UR3502

ET110C, UR3502 (D, GB)



Seite / Page	Pos.	ET110C	UR3502	Teil-Nr. Part No.	Hinweise Notes	Bezeichnung	Spezifikation Specification	Description
1	1	1	1	YA00000497		ANSCHLUSSLEITUNG	VDE L=430 H05VV-F2x0,75m m2	POWER CORD & PLUG
1	2	1	1	YA00000516		ZUGENTLASTUNG		CABLE PROTECTOR
1	3	1		YA00000661		GEHÄUSE-SET	Dolmar rot INC. 78	HOUSING ASSEMBLY
1	3		1	YA00000660		GEHÄUSE-SET	MAKITA blau INC. 78	HOUSING ASSEMBLY
1	4	1	1	YA00000562		LÜFTERGEHÄUSE LINKS		LEFT VOLUTE CASE
1	5	2	2	YA00000514		GUMMI		RUBBER PAD
1	6	2	2	YA00000618		BLECHSCHRAUBE	ST4x14	TAPPING SCREW
1	7	1	1	YA00000547		KABELKLEMMPLATTE		CABLE PRESS BOARD
1	8	2	2	YA00000501		LÜSTERKLEMME		TERMINAL SET
1	9	1	1	YA00000619		ELEKTRONIK		PCB CONTROL BOARD
1	10	1	1	YA00000499		DROSSEL		INDUCTANCE
1	11	1	1	YA00000554		SCHALTERHEBEL		SWITCH TRIGGER
1	12	1	1	YA00000513		FEDER		SPRING
1	13	1	1	YA00000498		KONDENSATOR	0,33µF	CAPACITOR
1	14	1	1	YA00000555		SCHALTER		SWITCH
1	15	1	1	YA00000539		ROHRDURCHFÜHRUNG		SPACING COLLAR
1	16	1	1	YA00000525		DRUCKKNOPF		PUSH BUTTON
1	17	1	1	YA00000511		DRUCKFEDER		COMPRESSION SPRING
1	18	1	1	YA00000620		BÜGELGRIFF KPL.	INC. 19-22	AUXILIARY HANDLE ASSEMBLY
1	19	4	4	YA00000621		KOMBI-SCHRAUBE	M5x30	SLOT THREE COMBINED NYLOC
1	20	1	1	YA00000564		BÜGELGRIFF		AUX.HANDLE COVER
1	21	1	1	YA00000563		SEITENGRIF		AUX.HANDLE SUPPORT
1	22	4	4	YA00000622		SICHERUNGSMUTTER	M5	SELF-LOCKING NUT
1	23	1	1	YA00000623		ISOLIERSCHLAUCH		INSULATING SHEATH
1	24	1	1	YA00000624		KOMBI-SCHRAUBE	M6x20	PAN HEAD MACHINE SCREW
1	25	1	1	YA00000541		HALTERING F. SCHULTERGURT		SHOULDER BELT RING
1	26	1	1	YA00000521		GUMMIABDECKUNG		RUBBER COVER
1	27	1	1	YA00000519		GRIFFUMHÜLLUNG		HANDLE SHEATH
1	28	4	4	YA00000625		BLECHSCHRAUBE	ST4,2x10	PLUM SELF TAPPING SCREW
1	29	1	1	YA00000560		MOTORGEHÄUSEABDECKUNG		REAR COVER
1	30	1	1	YA00000626		MOTOR KPL.	230V/1000W INC. 31-42,44-48,109	MOTOR ASSY
1	31	1	1	YA00000627		SICHERUNGSMUTTER	M6	SELF-LOCKING NUT
1	32	1	1	YA00000507		IMPELLER		IMPELLER
1	33	2	2	YA00000538		SCHRAUBE	M4x55	SCREW
1	34	2	2	YA00000523		FEDERUNTERLAGE	Ø4	SPRING PAD
1	35	2	2	YA00000524		FLACHSCHEIBE	A3	FLAT WASHER
1	36	1	1	YA00000531		BUCHSE		SLEEVE
1	37	1	1	YA00000526		TRÄGER		REAR BRACKET
1	38	1	1	YA00000505		FELD	230V/50Hz 1000W	STATOR ASSY
1	39	1	1	YA00000431		RILLENKUGELLAGER	608	BEARING
1	40	1	1	YA00000628		ANKER		ROTOR ASSEMBLY
1	41	1	1	YA00000430		RILLENKUGELLAGER	ø22xø10x6	BEARING
1	42	1	1	YA00000629		LAGERSCHILD B		REAR BRACKET ASSEMBLY
1	43	2	2	YA00000489		KOHLEBÜRSTE KPL.	INC. 44-46	CARBON BRUSH ASSY
1	44	2	2	652023960		KOHLEBÜRSTE	2 PCS/SET	CARBON BRUSH
1	45	2	2	YA00000502		KOHLEBÜRSTENANSCHLUSS		COPPER BRUSH HOLDER
1	46	2	2	YA00000503		BÜRSTENHALTER		BRUSH HOLDER
1	47	4	4	YA00000630		KOMBI-SCHRAUBE	M4x12	THREE COMBINATION SCREW
1	48	1	1	YA00000483		ROHRANSCHLUSS KPL.		SHAFT ASSY
1	50	1	1	YA00000550		FLEXIBLE WELLE		FLEXIBLE SHAFT
1	51	1	1	YA00000481		SCHAFTROHR		TUBE ASSY
1	52	1	1	YA00000528		CLIP		FLEXIBLE SHAFT CLIP
1	53	1	1	YA00000553		VERBINDUNGSSTÜCK		CONNECTOR
1	54	1	1	YA00000480		GETRIEBE KPL.	INC. 55-61, 63-71, 73-74	GEAR BOX ASSY
1	55	1	1	YA00000468		SCHEIBE		WASHER
1	56	1	1	YA00000434		C-SCHEIBE		C SHAPE RETAINING COLLAR
1	57	2	2	YA00000471		RILLENKUGELLAGER	6900	BEARING
1	58	1	1	YA00000440		SCHEIBE		WASHER
1	59	1	1	YA00000442		KEGELRAD		BEVEL GEAR
1	60	1	1	YA00000548		GETRIEBEGEHÄUSE		GEAR BOX
1	61	1	1	YA00000460		SENKKOPFSCHRAUBE	M4x8	COUNTERSUNK SCREW
1	63	1	1	YA00000542		SCHEIBE		WASHER
1	64	1	1	YA00000470		RILLENKUGELLAGER	629Z	BEARING
1	65	1	1	YA00000443		KEGELRAD		BEVEL GEAR
1	66	1	1	YA00000465		NUTFEDER	2,5x3,7xR5	WHITNEY KEY
1	67	1	1	YA00000552		WELLE		OUTPUT SHAFT
1	68	1	1	YA00000469		RILLENKUGELLAGER	6002-2RS	BEARING
1	69	1	1	YA00000467		FEDERING		JUMP RING
1	70	1	1	YA00000515		BUCHSE		AXLE SLEEVE
1	71	1	1	YA00000441		ÖLDICHTUNG		OIL SEAL
1	73	1	1	YA00000533		DICHTUNG		SEALING SHEET
1	74	1	1	YA00000459		SECHSKANTSCHRAUBE	M8x10	HEX HEAD SCREW



Seite / Page	Pos.	ET110C	UR3502	Teil-Nr. Part No.	Hinweise Notes	Bezeichnung	Spezifikation Specification	Description
1	75	2	2	YA00000458		SCHRAUBE-SET		SCREW SET
1	76	2	2	YA00000461		MUTTER	M5	SELF-LOCKING NUT
1	77	1	1	YA00000446		SCHRAUBE-SET		SCREW SET
1	78	1	1	YA00000546		SCHUTZHAUBE		PROTECTOR
1	79	2	2	YA00000631		KOMBI-SCHRAUBE	M5x14	SLOT THREE COMBINED NYLOC
1	80	1	1	YA00000632		KOMBI-SCHRAUBE	M6x14	SLOT THREE COMBINED NYLOC
1	81	1	1	YA00000540		FLANSCHSCHEIBE		AXLE RING
1	82	1	1	YA00000681		FADENKOPF	Tap&Go INC. 84-91	TRIMMER HEAD ASS'Y
1	83	1	1	YA00000477		GEHÄUSE KPL.	INC. 84-86	HOUSING COMPLETE
1	84	1	1	YA00000678		GEHÄUSE		CASE
1	85	2	2	YA00000532		FADENBUCHSE		EYELET
1	86	1	1	YA00000535		MUTTER		NUT
1	87	1	1	YA00000466		DRUCKFEDER		SPRING
1	88	1	1	YA00000510		SCHEIBE		GEAR CUSHION 1
1	89	1	1	YA00000679		SPULE		SPOOL
1	90	1	1			MÄHFADEN	ø 2,0 mm	NYLON LINE
1	91	1	1	YA00000680		DECKEL		COVER
1	92	1	1	YA00000636		SCHUTZHAUBE KPL.	INC. 93-98	PROTECTOR ASS'Y
1	93	4	4	YA00000637		KOMBISCHRAUBE	M6x20	COMPOSITE PAN HEAD THREE COMBINATION SCREW
1	94	2	2	YA00000638		KREUZSCHLITZ-FLACHKOPFSCHRAUBE	M5x14	CROSS RECESSED PAN HEAD SCREW
1	95	1	1	YA00000545		SCHUTZHAUBE		PROTECTOR
1	96	1	1	YA00000439		FADENMESSER		LINE CUTTER
1	97	2	2	YA00000622		SICHERUNGSMUTTER	M5	SELF-LOCKING NUT
1	98	1	1	YA00000472		MESSERSCHUTZ		BLADE COVER
1	100	1	1	YA00000639		SCHULTERGURT		STRAP
1	101	1	1	YA00000473		STIFT		PIN
1	102	1	1	YA00000438		KOMBISCHLÜSSEL		BOX WRENCH
1	103	2	2	YA00000640		SCHRAUBE	M5x10	SCREW
1	104	2	2	YA00000641		BLECHSCHRAUBE	ST3x10	PLUM SELF TAPPING SCREW
1	105	12	12	652023653		SCHRAUBE SELBSTSCHNEIDEND	4x16	SELF-TAPPING SCREW
1	106	1		YA00000661		GEHÄUSE-SET	Dolmar rot INC. 3	HOUSING ASSEMBLY
1	106		1	YA00000660		GEHÄUSE-SET	MAKITA blau INC. 3	HOUSING ASSEMBLY
1	107	1	1	YA00000561		LÜFTERGEHÄUSE RECHTS		RIGHT VOLUTE CASE
1	108	2	2	YA00000514		GUMMI		RUBBER PAD
1	109	3	3	YA00000630		KOMBI-SCHRAUBE	M4x12	THREE COMBINATION SCREW
1	110	1	1	YA00000657		KREUTZSCHLITZSCHRAUBE	M3x6	CROSS RECESSED HEAD SCREW

ET110C, UR3502



**1** ET-110 C, UR3502  
ET-110 C, UR3502

	<b>Zeichenerklärung</b>	<b>Key to symbols</b>
<b>=&gt; 1999999</b> <b>2000000 =&gt;</b> <b>2003.04 =&gt;</b> <b>TI 2003/07</b> <b>Acc.</b> <b>=</b> <b>{</b> <b>m</b> <b>Corr.</b>	Produktion bis Serien-Nr. Neues Teil ab Serien-Nr. Neues Teil ab Jahr / Monat Siehe Technische Information Jahr / Nr. Zubehör (nicht im Lieferumfang) Keine Serienausführung, jedoch verwendbar Beinhaltet Positions-Nr. Meterware Druckfehlerberichtigung	Production to serial number New part from serial number New part from Year / Month See Technical Information Year / No. Accessories (not included in the delivery inventory) No standard execution, may be used Contains item number Sold by the meter Error correction
	Änderungen vorbehalten	Specifications subject to change without notice